

A46JE

ELECTRIC ARTICULATING BOOM LIFTS



- Class-leading electric articulating boom lift
- Zero-emission, clean and quiet operation
- Tight turning radius for excellent maneuverability
- Superb working envelope and no tailswing
- Robust, reliable & easy-to-use

 **snorkel**[™]
www.snorkellifts.com

ELECTRIC ARTICULATING BOOM LIFTS

A46JE

DIMENSIONS A46JE

Max. Working Height	52' 3" (15.92m)
Max. Platform Height	46' 3" (14.09m)
Max. Horizontal Reach	24' 11" (7.59m)
Clearance Height @ Max. Outreach	24' 6" (7.46m)
Platform Size	39" x 6' (0.99m x 1.83m)
Overall Length (A)	18' 4" (5.58m)
Overall Width (B)	5' 8" (1.72m)
Stowed Height (C)	6' 7" (2.00m)
Ground Clearance	6" (152mm)

PERFORMANCE

Platform Capacity	500 lbs (227kg)
Max. Drive Height	46' 3" (14.09m)
Max. Wind Speed	28mph (12.5m/s)
Max. Drive Speed (Stowed)	3.2mph (5.15km/h)
Max. Drive Speed (Elevated)	0.6mph (0.96km/h)
Gradeability	30%
Jib Length	5' (1.52m)
Jib Arc	140°
Platform Rotation	160°
Superstructure Rotation (Non-continuous)	360°
Tailswing	0" (0.0m)
Raise / Lower Time	99 / 92 seconds
Inside Turning Radius	2' (0.61m)
Outside Turning Radius	9' (2.74m)
Tires (Non-marking foam-filled)	IN240/55D 17.5"
Controls	Proportional
Drive System	2WD – electric

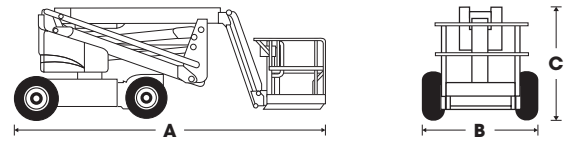
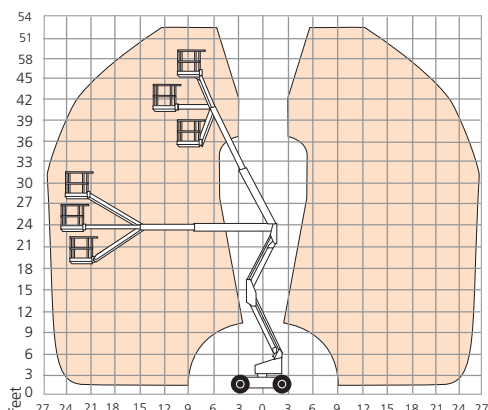
POWER

Power Source	(8) 6V 360Ah batteries
--------------	------------------------

WEIGHT

Weight	14,690 lbs (6,663kg)
--------	----------------------

WORKING ENVELOPE



STANDARD FEATURES

- Snorkel Guard™ secondary guarding system
- Multi-function proportional controls
- Non-marking tires
- Zero tailswing
- Tri-entry platform
- Power line to platform
- Platform overload system
- Hour meter & on-board diagnostics display
- Battery charge indicator
- Drive motion alarm
- Tilt alarm & cut out
- Flashing amber strobe
- Horn
- 2-year parts & labor warranty
- 5-year structural warranty

OPTIONS

- 5' aluminum platform with swing-gate
- Airline to platform
- Environmental hydraulic oil
- Maintenance-free batteries
- Special paint colors

snorkel

www.snorkellifts.com

P.O. Box 1160
St. Joseph, MO 64502-1160, USA
Tel: 1 (785) 989-3000
Toll-Free: 1 (800) 255-0317
Email: sales.usa@snorkellifts.com