

# TB80/TB86J

## LARGE TELESCOPIC BOOM LIFTS



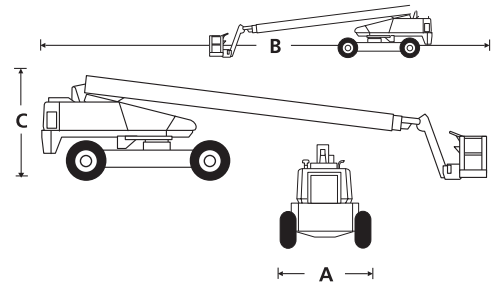
- Robust diesel telescopic boom lifts
- Available with and without a jib boom
- Powerful 4-wheel drive and 4-wheel steer
- Excellent performance on rough terrain
- Designed for construction applications

 **snorkel**<sup>™</sup>  
[www.snorkellifts.com](http://www.snorkellifts.com)

# LARGE TELESCOPIC BOOM LIFTS

# TB80/TB86J

DIMENSIONS	TB80	TB86J
Max. working height	86 ft	91 ft 1 in
Max. platform height	80 ft	85 ft 1 in
Max. horizontal reach	71 ft 2 in	77 ft 3 in
Platform size	8 ft x 3 ft	8 ft x 3 ft
Overall width (A)	8 ft 6 in	8 ft 6 in
Overall length (B)	38 ft 8 in	42 ft 3 in
Stowed height (C)	9 ft 6 in	9 ft 6 in
Ground clearance	13 in	13 in

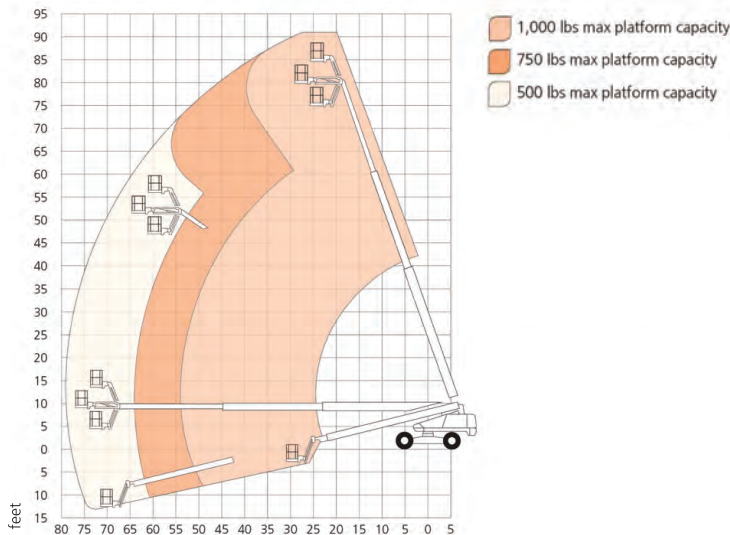


PERFORMANCE		
Platform capacity	500 / 750 / 1,000 lbs	
Max. drive height	80 ft	85 ft 1 in
Max. wind speed	28 mph	28 mph
Max. drive speed (stowed)	3 mph	3 mph
Max. drive speed (elevated)	0.6 mph	0.6 mph
Jib length	n/a	5 ft 6 in
Jib working arc	n/a	135°
Platform rotation	170°	178°
Superstructure rotation (continuous)	360°	360°
Tailswing	78.5 in	78.5 in
Raise/lower time	70/65 sec	65/65 sec
Gradeability	40%	40%
Inside turning radius	7 ft 10 in	7 ft 10 in
Outside turning radius	15 ft 6 in	15 ft 6 in
Tires	15 x 625 foam filled lug	
Controls	Proportional joystick	
Drive system	4-wheel drive	

POWER	
Power source	Kubota V2403 65hp diesel - Tier 4 Final

WEIGHT		
Weight	37,672 lbs	39,930 lbs

## WORKING ENVELOPE



## STANDARD FEATURES

- Snorkel Guard™ secondary guarding system
- 4-wheel drive, steer and crab steer
- Hydraulic platform rotation
- 360° continuous turntable rotation
- Drive motion alarm
- Flashing amber light
- Foam filled lug tires
- Proportional drive, boom lift, swing & extend
- Rheostat control for jib & platform level
- Power line to platform
- 3.5° tilt alarm
- Tri-entry platform
- Dual lanyard attachment points
- Hour meter & on-board diagnostics display
- Horn
- 2 year parts & labor, 5 year structural warranty
- ANSI compliant

## OPTIONS

- Special paint colors
- Airline to platform
- AC generator 110V/2.5kW
- Non-marking tires
- Cold weather package
- Extreme cold weather package
- Extreme environment package
- Light package
- Tow kit
- Dual fuel (LP/gas)
- Glazier package
- Utility package
- 12kW generator package
- 12kW generator/welder package
- Environmental hydraulic oil
- Tool tray
- Pipe rack
- Personal fall arrest system

**snorkel** [www.snorkellifts.com](http://www.snorkellifts.com)

P.O. Box 1160  
 St. Joseph, MO 64502-1160, USA  
 Tel: 1 (785) 989-3000  
 Toll-Free: 1 (800) 255-0317  
 Sales Fax: 1 (785) 989-3070  
 Parts Fax: 1 (785) 989-3077